



Design & Production

MTP Traffic Sign



Solar Traffic Sign



Active day and night

Design and produce in UAE(Manufactory)



made in UAE

**Solar
Flashing Light**
Model number: SF30CDN5W

MTP Brand



MTP Traffic Sign

Tel: +971 6 55 2 99 15 Fax: +971 6 55 2 99 36 Mob: +971 56 78 56 255

P.O.Box: 9401, Emirates Industrial city – Sharjah - UAE

Email: mtpfzc@gmail.com

www.UATmtp.com

Technical Specification

Dimension	355*355*185mm
Weight	7.3Kg
Body Material	Polycarbonate with Untie UV (MTP Brand)
Solar power	10 Watts, Life time more than 20 years
Battery	Internal 12 volt, 7Ah, sealed lead acid
LED module	single color (MTP Brand)
LED quantity	110pcs Super high bright color
LED Color	Red or Yellow
LED Life	More than 100,000 Hours
Light luminous	8000mcd
Light Intensity	Automatic regulation light intensity in day and night (day intensity 5 times night) with Microcontroller
Working time after full charge	7 days
Working time in cloudy weather	14 days
Visible distance	More than 1000m
Angle	100 Degree
Operating Temperature	-20° C to 75° C
Controller Board	MTP Brand

MTP Traffic Sign

Tel: +971 6 55 2 99 15 Fax: +971 6 55 2 99 36 Mob: +971 56 78 56 255

P.O.Box: 9401, Emirates Industrial city– Sharjah - UAE

Email: mtpfzc@gmail.com

www.UATmtp.com

Technical properties of Solar Flashing Light (MTP Brand)

1. The quality of all parts of the Flashing Light is from finest materials of polycarbonate. Also, the color of body box is special for this kind of work has following technical properties:

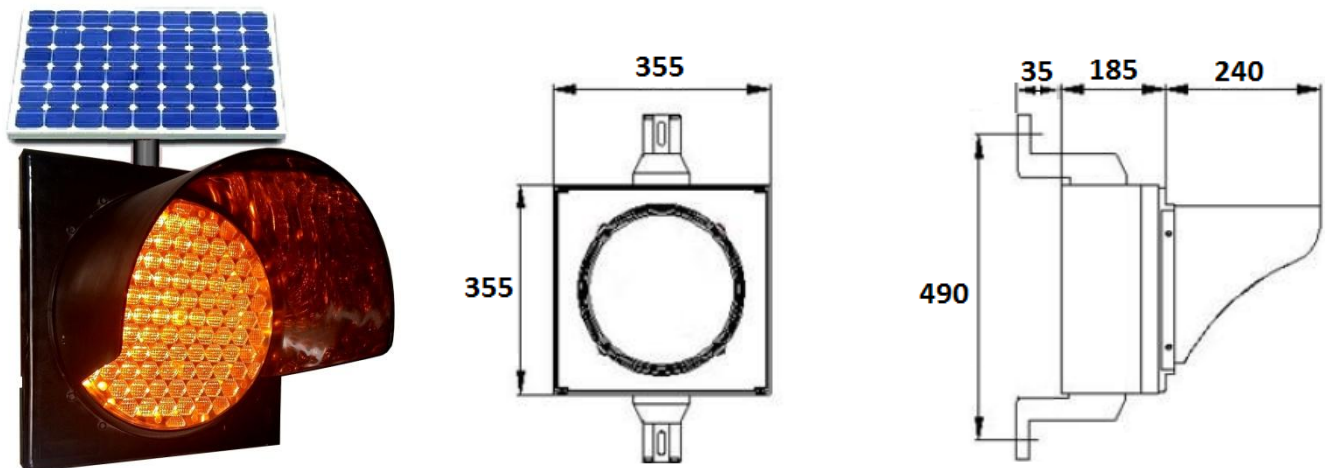
1-1. Melting point: 485 °c

1-2. Degree of heat in glass removing: 150 °c

1-3. Shock strength: 12 kg/cm

1-4. Tensile resistance: 59 kg/cm²

2. Size of its body is almost 185x355x355mm; its lens diameter is about 300mm which its 280mm is observed by others.



3. Full mask of flashing light: the diameter of full mask is 330 mm in top side and in the point of its connection into main body; this mask has the 300 mm diameter with depth of 215mm. This connection is done by a screw, being put on the body.

4. Half mask: The height of this mask is 185mm in outside of the body and its width is considered 230mm in the place of its connection with main body. This is done by a screw, being put on the body.

5. Door shall be fastening on the body, in a shape toggle. Also, it has a rubber for the purpose of insulation.

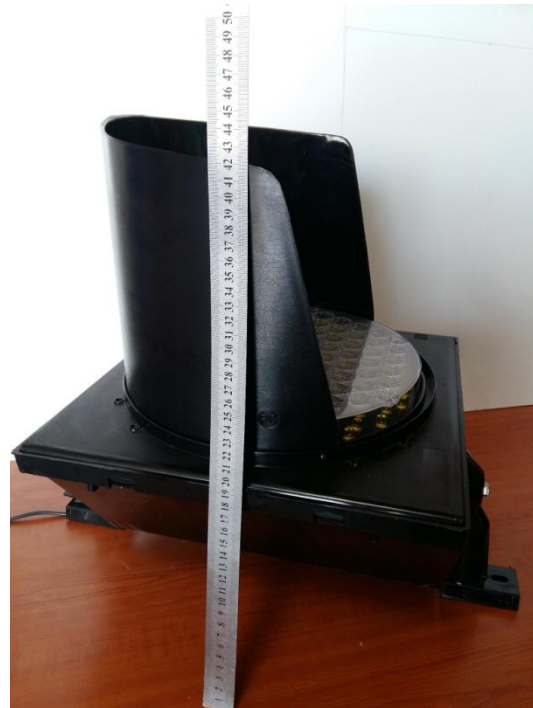
MTP Traffic Sign

Tel: +971 6 55 2 99 15 Fax: +971 6 55 2 99 36 Mob: +971 56 78 56 255

P.O.Box: 9401, Emirates Industrial city– Sharjah - UAE

Email: mtpfzc@gmail.com

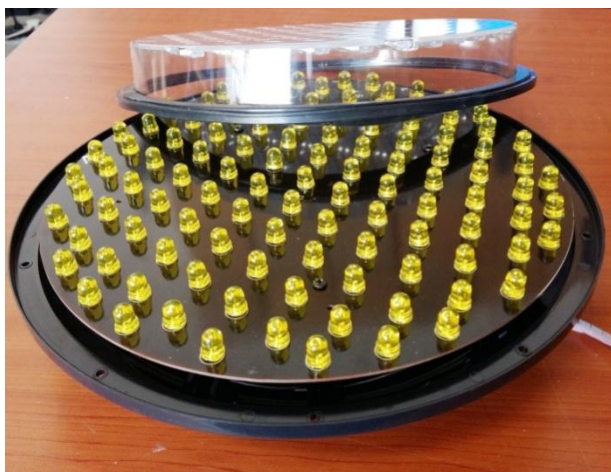
www.UATmtp.com



6. LED modulation (MTP Brand)

6-1. Casing of body is made from high quality polycarbonate, being suitable for Flashing Light.

6-2. External lenses made from grid polycarbonate, being suitable for lens. External lens is used for correcting light diffusion.



MTP Traffic Sign

Tel: +971 6 55 2 99 15 Fax: +971 6 55 2 99 36 Mob: +971 56 78 56 255

P.O.Box: 9401, Emirates Industrial city- Sharjah - UAE

Email: mtpfzc@gmail.com

www.UATmtp.com

Also, it is responsible for protecting the set, so that it protects electronically set and filter from damages, resulting from strong shock (stone) or burning, as a result of throwing pyrotechnics parts. These shocks shall be cause of damaging external lens.

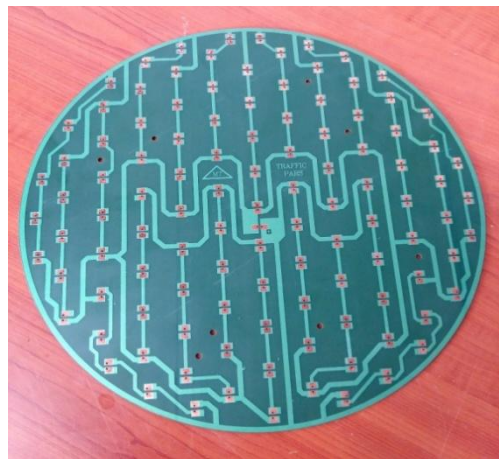
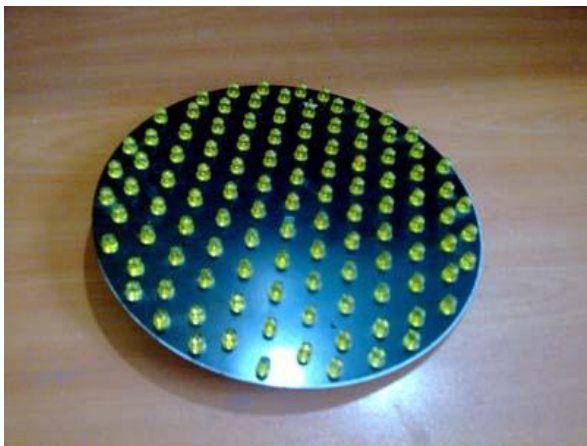
Changing and replacing external lens is easily possible by user.

6-3. LED Module

LEDs are identified very well and amount of their desired life is 100.000 hours in lawful range for traffic light and traffic signals and its light intensity is 8000mcd. Total numbers of LEDs in one module are equal to 110pcs.



LEDs module and its power supply are surely put on casing. Then insulated rubber is installed on the body, so there shall be no probabilities for entering water, damp and dust into electronically set.



MTP Traffic Sign

Tel: +971 6 55 2 99 15 Fax: +971 6 55 2 99 36 Mob: +971 56 78 56 255

P.O.Box: 9401, Emirates Industrial city– Sharjah - UAE

Email: mtpfzc@gmail.com

www.UATmtp.com

7. Sealed Lead Acid batteries of 1×12v (7Ah), having desired life of 5 years.



8. Solar panelis 10W, 17v0.68A, with the efficiency of %16.



SILICON SOLAR PV MODULE	
Model	SA-10P
Pm	10W
Vmp	18V
Imp	0.56A
Voc	21.24V
Isc	0.61A
Dimension	348*386*23mm
Max System Voltage	1000V
Test Condition	AM1.5 1000W/m ² 25°C

MTP Traffic Sign

Tel: +971 6 55 2 99 15 Fax: +971 6 55 2 99 36 Mob: +971 56 78 56 255

P.O.Box: 9401, Emirates Industrial city- Sharjah - UAE

Email: mtpfzc@gmail.com

www.UATmtp.com

9. Intelligent microcontroller system (MTP Brand)

9-1. Measuring voltage of battery, solar panel, charge current and related measuring.

9-2. light Regulation and optimization of consumption, according to charge current (environmental light) and battery voltage and solar panel.

9-3. Neutralizing of change effects of battery voltage in light illumination of flashing light.

9-4. preventing of battery over charge and undesired de-charge of battery and neutralizing effect of heat.



9.5. Using modulation of PWM for changing light illumination.

9.6. Probability of performing all changes, according to orders of buyer, (Software changes).

9.7. Working time, without any charge and with full battery is almost 14 days.

9.8. Charging time for empty battery is 24 hours in light, in case of performing operation, and 18 hours without any operation.

9.9. Maximum exited rates(day) into its minimum (night) is 3to 1 and (it is changeable, on the basis of order).

MTP Traffic Sign

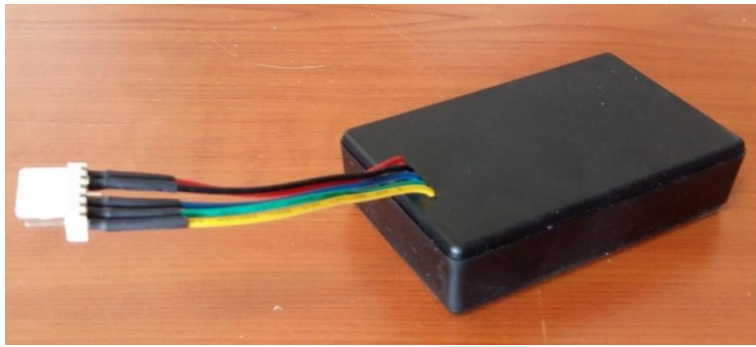
Tel: +971 6 55 2 99 15 Fax: +971 6 55 2 99 36 Mob: +971 56 78 56 255

P.O.Box: 9401, Emirates Industrial city– Sharjah - UAE

Email: mtpfzc@gmail.com

www.UATmtp.com

Controller circuit is considered in a separated package.



It shall be connected into set of light, by a white socket. In case of any problem or need for changing program, mentioned package is easily separated from socket and being replaced by another package.

Details of solar Flashing Light and guide for its installation:

- Solar Panel
- A pair of stands
- Main body
- Round Clamp

MTP Traffic Sign

Tel: +971 6 55 2 99 15 Fax: +971 6 55 2 99 36 Mob: +971 56 78 56 255

P.O.Box: 9401, Emirates Industrial city– Sharjah - UAE

Email: mtpfzc@gmail.com

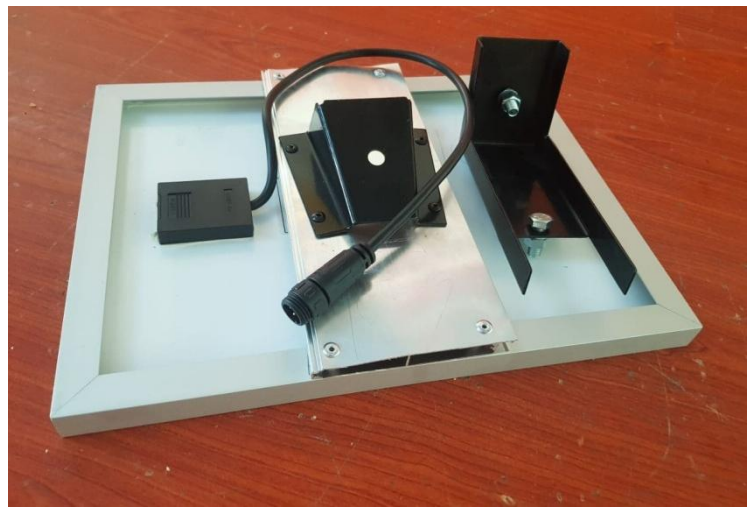
www.UATmtp.com

-Solar Panel:

Each one- part Flashing Light has a 10w solar panel,

Each solar panel has a cable, having one socket. After installation solar panel on the post, mentioned cable connect to female socket from flashing light. then,flashing light will be ON automatically afterconnect to solar panel.

Light intensity will decrease automatically at night and increase at day.



Solar panel will fix on the flashing light with black holder and Nut Bolt which is attached to Flashing light. After installation Flashing light and Solar Panel, solar panelface direction must adjust into south side.if south side is prevented by some building or tree's leaves, solar panel face should be adjusted to East or West.

MTP Traffic Sign

Tel: +971 6 55 2 99 15 Fax: +971 6 55 2 99 36 Mob: +971 56 78 56 255

P.O.Box: 9401,Emirates Industrial city– Sharjah - UAE

Email: mtpfzc@gmail.com

www.UATmtp.com

- Bracket

Each Flashing light has a pair of holders for installation on the pole, called Bracket. For this installation, at first, Bracket are fastened on the flashing light, then Flashing light will be installed on its pole by 2 pcs of hose clips.



- Round Clamp (Hose Clips)

2 round clamps are attached to one set of Solar Flashing Light,



MTP Traffic Sign

Tel: +971 6 55 2 99 15 Fax: +971 6 55 2 99 36 Mob: +971 56 78 56 255

P.O.Box: 9401, Emirates Industrial city– Sharjah - UAE

Email: mtpfzc@gmail.com

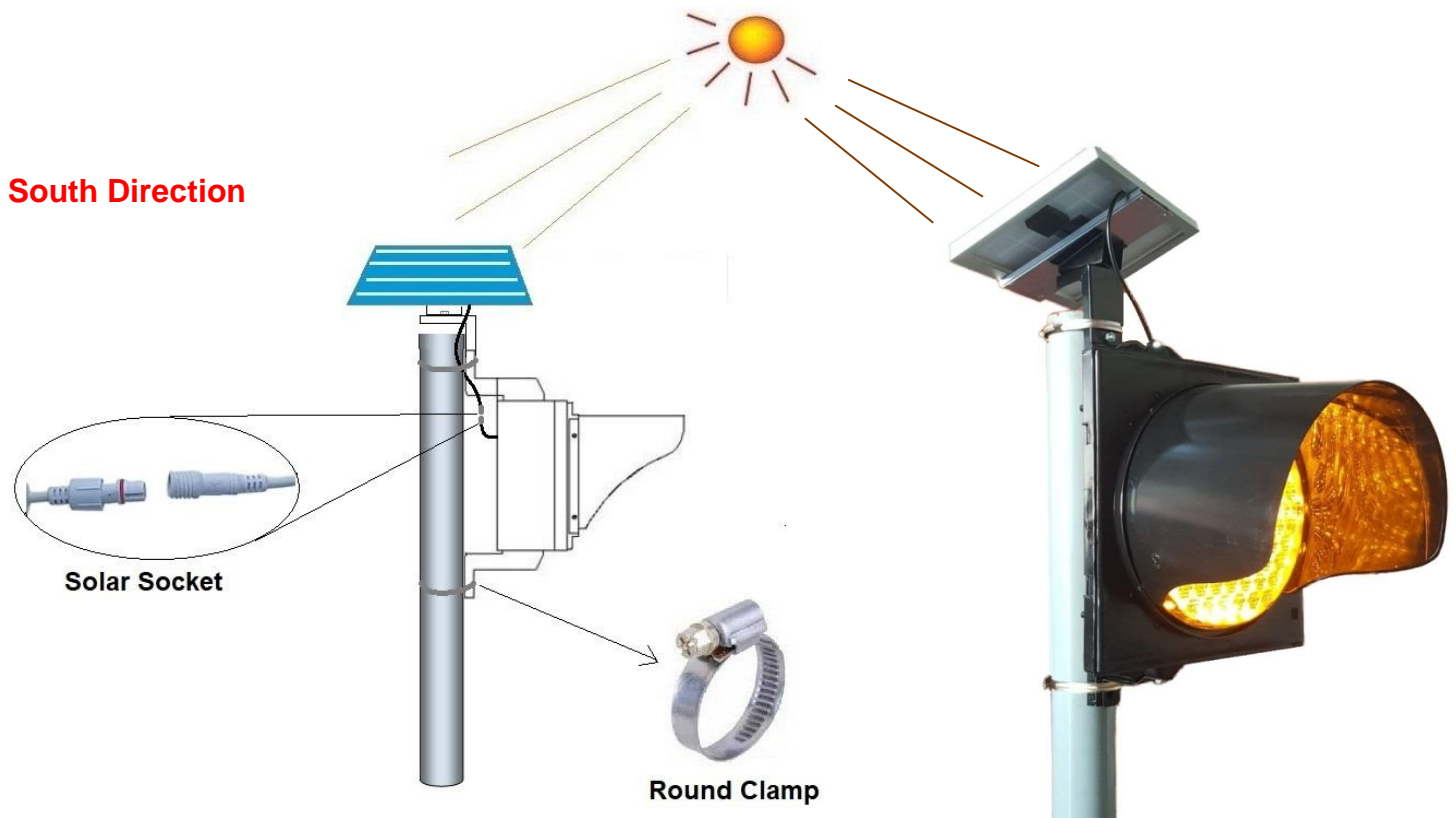
www.UATmtp.com

Installation



- 1- Fixing Up and Down Brackets on the Flashing light with nut Bolts,
- 2- Fixing Solar Black Holder on the Upper Bracket with Nut Bolt,
- 3- Instal Flashing Light on the pole with 2 Round Hose Camps,
- 2- Fixing Solar panel on the Black Holder with Nut Bolt and adjust it on **South direction**,
- 3- Connect solar cable Socket to flashing light Socket,
- 4- Flashing Light will be ON automatically after connected to solar panel,
- 5- Its light will decrease automatically at night and increase at day,

Note: If want keep Flashing Light on the store, please disconnect solar cable Socket,



MTP Traffic Sign

Tel: +971 6 55 2 99 15 Fax: +971 6 55 2 99 36 Mob: +971 56 78 56 255

P.O.Box: 9401, Emirates Industrial city- Sharjah - UAE

Email: mtpfzc@gmail.com

www.UATmtp.com



MTP Traffic Sign

Tel: +971 6 55 2 99 15 Fax: +971 6 55 2 99 36 Mob: +971 56 78 56 255

P.O.Box: 9401, Emirates Industrial city– Sharjah - UAE

Email: mtpfzc@gmail.com

www.UATmtp.com



MTP Traffic Sign

Tel: +971 6 55 2 99 15 Fax: +971 6 55 2 99 36 Mob: +971 56 78 56 255

P.O.Box: 9401, Emirates Industrial city- Sharjah - UAE

Email: mtpfzc@gmail.com

www.UATmtp.com



MTP Traffic Sign

Tel: +971 6 55 2 99 15 Fax: +971 6 55 2 99 36 Mob: +971 56 78 56 255

P.O.Box: 9401, Emirates Industrial city- Sharjah - UAE

Email: mtpfzc@gmail.com

www.UATmtp.com



MTP Traffic Sign

Tel: +971 6 55 2 99 15 Fax: +971 6 55 2 99 36 Mob: +971 56 78 56 255

P.O.Box: 9401, Emirates Industrial city- Sharjah - UAE

Email: mtpfzc@gmail.com

www.UATmtp.com



Bur Dubai and Dubai Deira

MTP Traffic Sign

Tel: +971 6 55 2 99 15 Fax: +971 6 55 2 99 36 Mob: +971 56 78 56 255

P.O.Box: 9401, Emirates Industrial city- Sharjah - UAE

Email: mtpfzc@gmail.com

www.UATmtp.com



MTP Traffic Sign

Tel: +971 6 55 2 99 15 Fax: +971 6 55 2 99 36 Mob: +971 56 78 56 255

P.O.Box: 9401, Emirates Industrial city- Sharjah - UAE

Email: mtpfzc@gmail.com

www.UATmtp.com



Dubai RTA-front of HQ building

MTP Traffic Sign

Tel: +971 6 55 2 99 15 Fax: +971 6 55 2 99 36 Mob: +971 56 78 56 255

P.O.Box: 9401, Emirates Industrial city- Sharjah - UAE

Email: mtpfzc@gmail.com

www.UATmtp.com



Sharjah-in front of Municipality new building



Dubai Silicon

MTP Traffic Sign

Tel: +971 6 55 2 99 15 Fax: +971 6 55 2 99 36 Mob: +971 56 78 56 255

P.O.Box: 9401, Emirates Industrial city- Sharjah - UAE

Email: mtpfzc@gmail.com

www.UATmtp.com



Sharjah Media Corporation

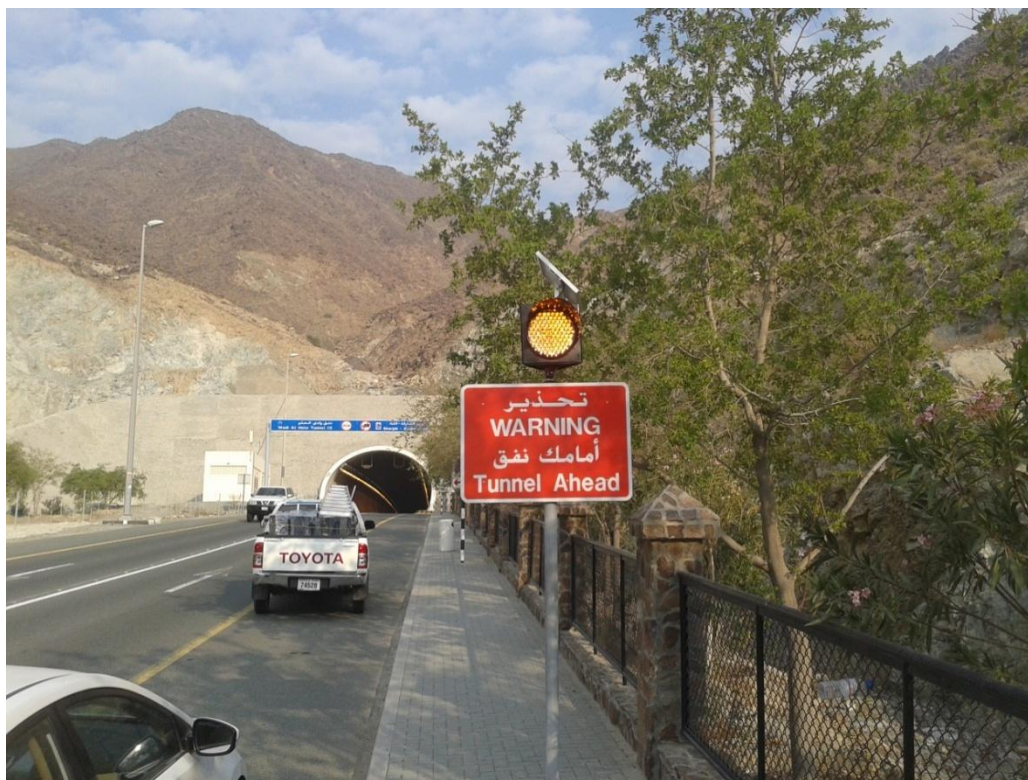
MTP Traffic Sign

Tel: +971 6 55 2 99 15 Fax: +971 6 55 2 99 36 Mob: +971 56 78 56 255

P.O.Box: 9401, Emirates Industrial city- Sharjah - UAE

Email: mtpfzc@gmail.com

www.UATmtp.com



Sharjah–Kalba Road



Sharjah–Fujairah Road

MTP Traffic Sign

Tel: +971 6 55 2 99 15 Fax: +971 6 55 2 99 36 Mob: +971 56 78 56 255

P.O.Box: 9401, Emirates Industrial city– Sharjah - UAE

Email: mtpfzc@gmail.com

www.UATmtp.com



Dubai –Mirdif-Al Warqa

MTP Traffic Sign

Tel: +971 6 55 2 99 15 Fax: +971 6 55 2 99 36 Mob: +971 56 78 56 255

P.O.Box: 9401, Emirates Industrial city– Sharjah - UAE

Email: mtpfzc@gmail.com

www.UATmtp.com



Sharjah –Al Mamzar Road

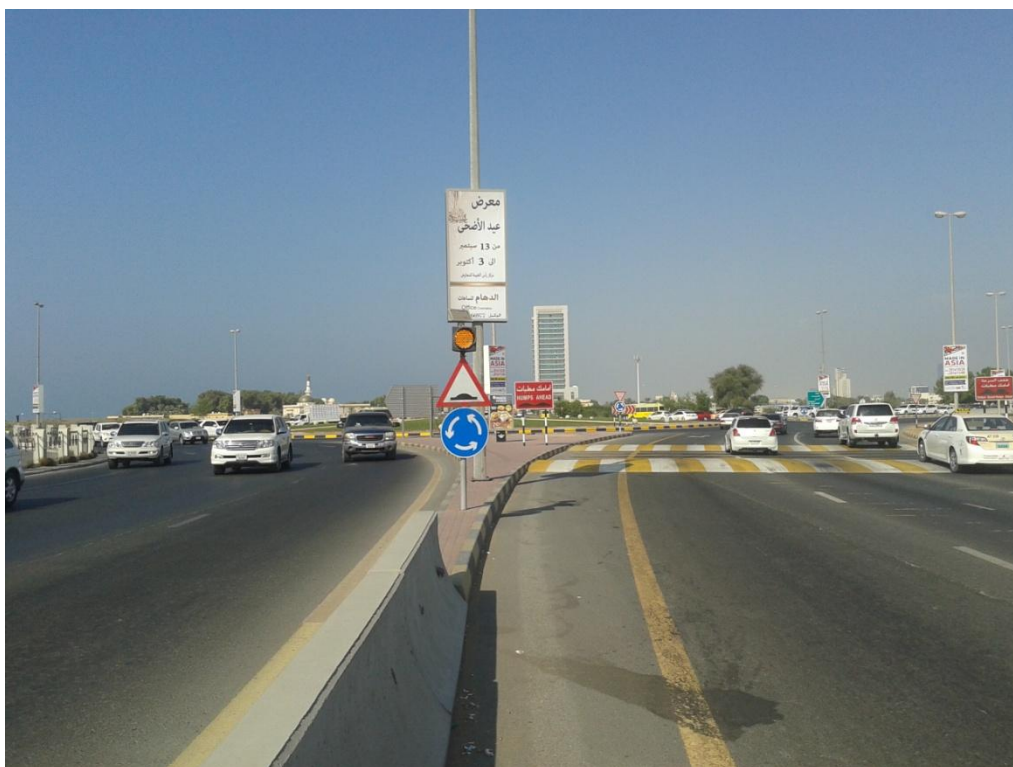
MTP Traffic Sign

Tel: +971 6 55 2 99 15 Fax: +971 6 55 2 99 36 Mob: +971 56 78 56 255

P.O.Box: 9401, Emirates Industrial city– Sharjah - UAE

Email: mtpfzc@gmail.com

www.UATmtp.com



Ras Al Khaimah-clock Roundabout

MTP Traffic Sign

Tel: +971 6 55 2 99 15 Fax: +971 6 55 2 99 36 Mob: +971 56 78 56 255

P.O.Box: 9401, Emirates Industrial city- Sharjah - UAE

Email: mtpfzc@gmail.com

www.UATmtp.com



Sharjah Airport Free Zone-Gate

MTP Traffic Sign

Tel: +971 6 55 2 99 15 Fax: +971 6 55 2 99 36 Mob: +971 56 78 56 255

P.O.Box: 9401, Emirates Industrial city- Sharjah - UAE

Email: mtpfzc@gmail.com

www.UATmtp.com